

Physical Specification (mm)

Nominal Voltage		12V
Nominal Capacity(20HR)		55Ah
Dimension	Length	276 ± 2mm(10.87inches)
	Width	168 ± 2mm(6.61inches)
	Container Height	175 ± 2mm(6.89inches)
	Total Height(with Terminal)	206 ± 2mm(8.11inches)
Weight With Acid		Approx 19.3Kg(42.5lbs)
Acid		1.310 ± 0.015g/cm ³ (25°C)
Standard Terminal		AP&STUD
Cell layout		1
Hold-Down		/
Case		Black-Material (PP)
Cover		Black-Material (PP)
Handle		Black-Material (PP)

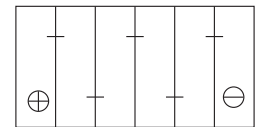
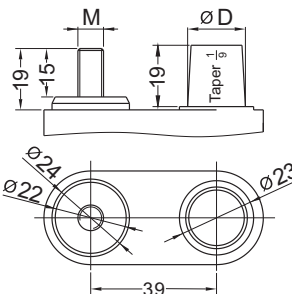
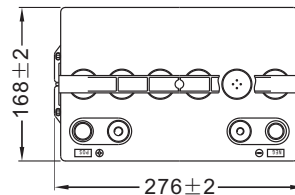
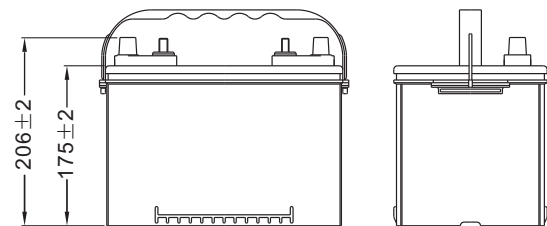
Electrical Specification

Rated Capacity	20 hour rate(2.0A)	55Ah
Reserve Capacity (RC)25A@10.5V		120min
Cold Cranking Performance Amps(CCA) @0°F(-18°C)		650A(BCI)

Standard Terminal (mm)

Terminal Type	D		M	
	Positive	Negative	Positive	Negative
AP&STUD	19.5 ⁰ _{-0.3}	17.9 ⁰ _{-0.3}	3/8"	5/16"

Dimensions (mm)

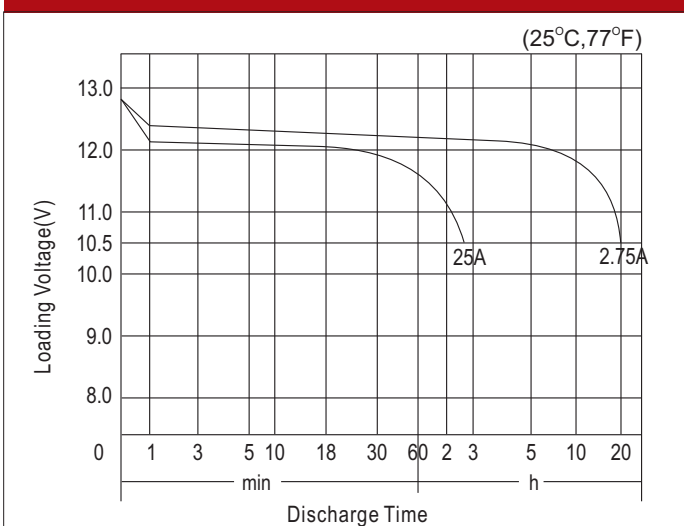


Figure(1)

Terminal

Cell Layout

Discharge Characteristics



Discharge Characteristics

